

# **A LOST HISTORY OF THE TRANS- MISSISSIPPI EXPOSITION BUILDINGS**

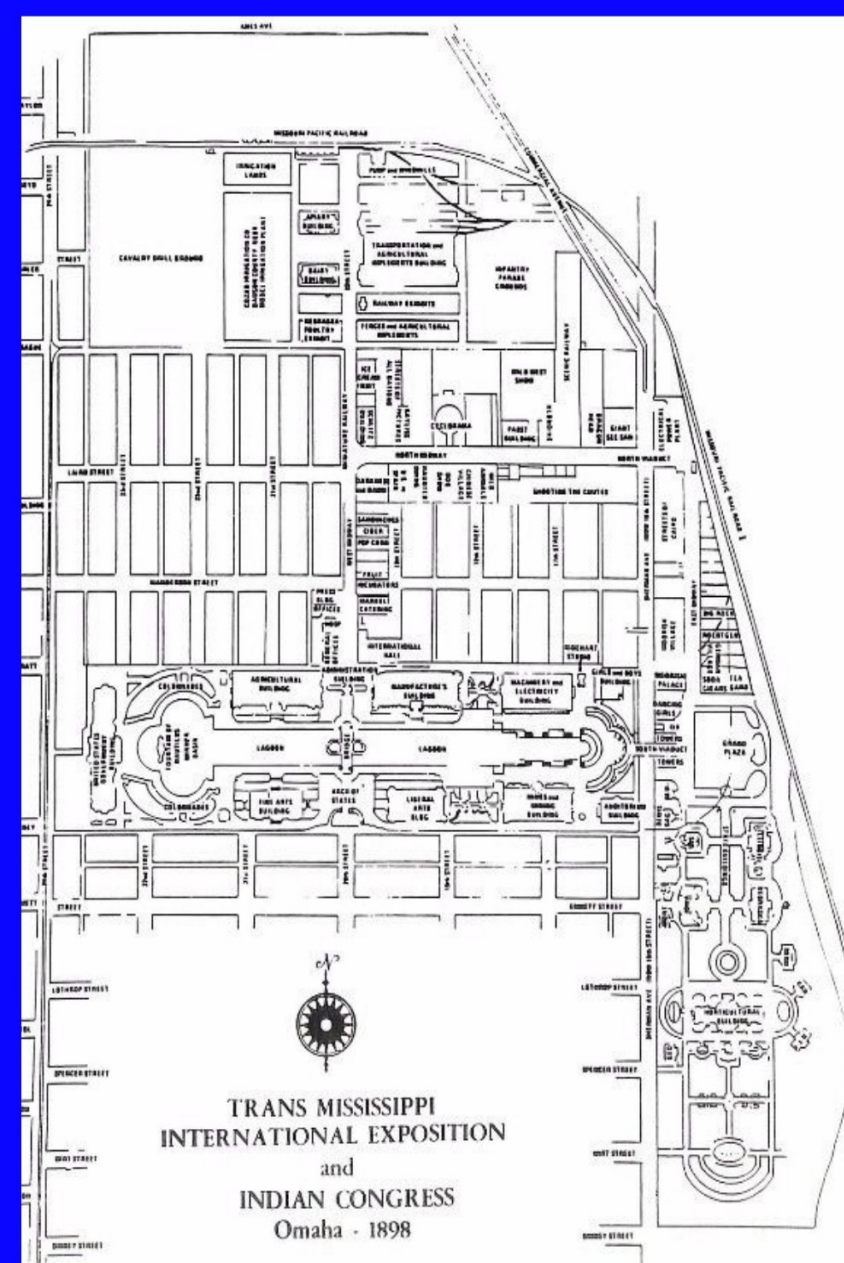
ADAM FLETCHER SASSE

EDITOR, [NORTHOMAHAHISTORY.COM](http://NORTHOMAHAHISTORY.COM)

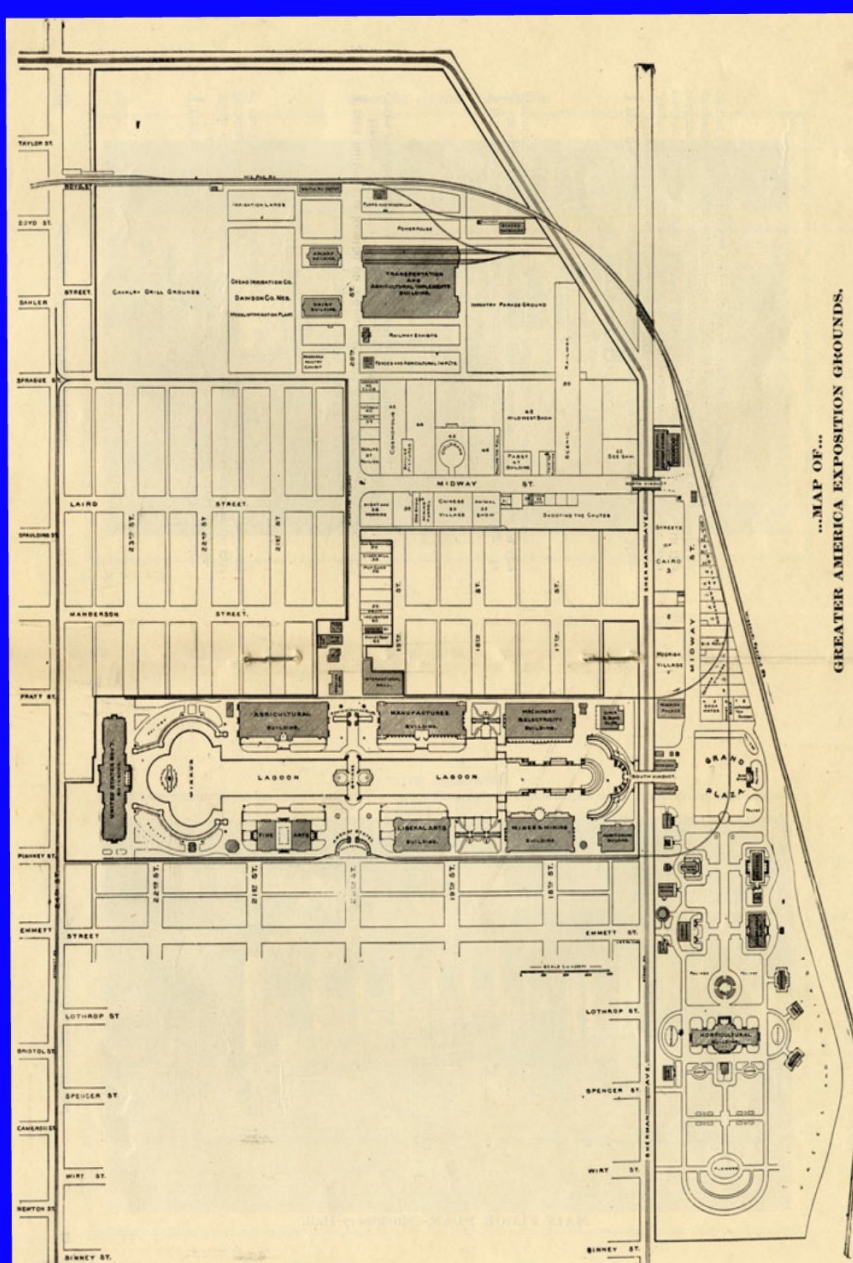
HOST, NORTH OMAHA HISTORY PODCAST

AUTHOR, *NORTH OMAHA HISTORY*  
VOLUMES 1, 2 & 3

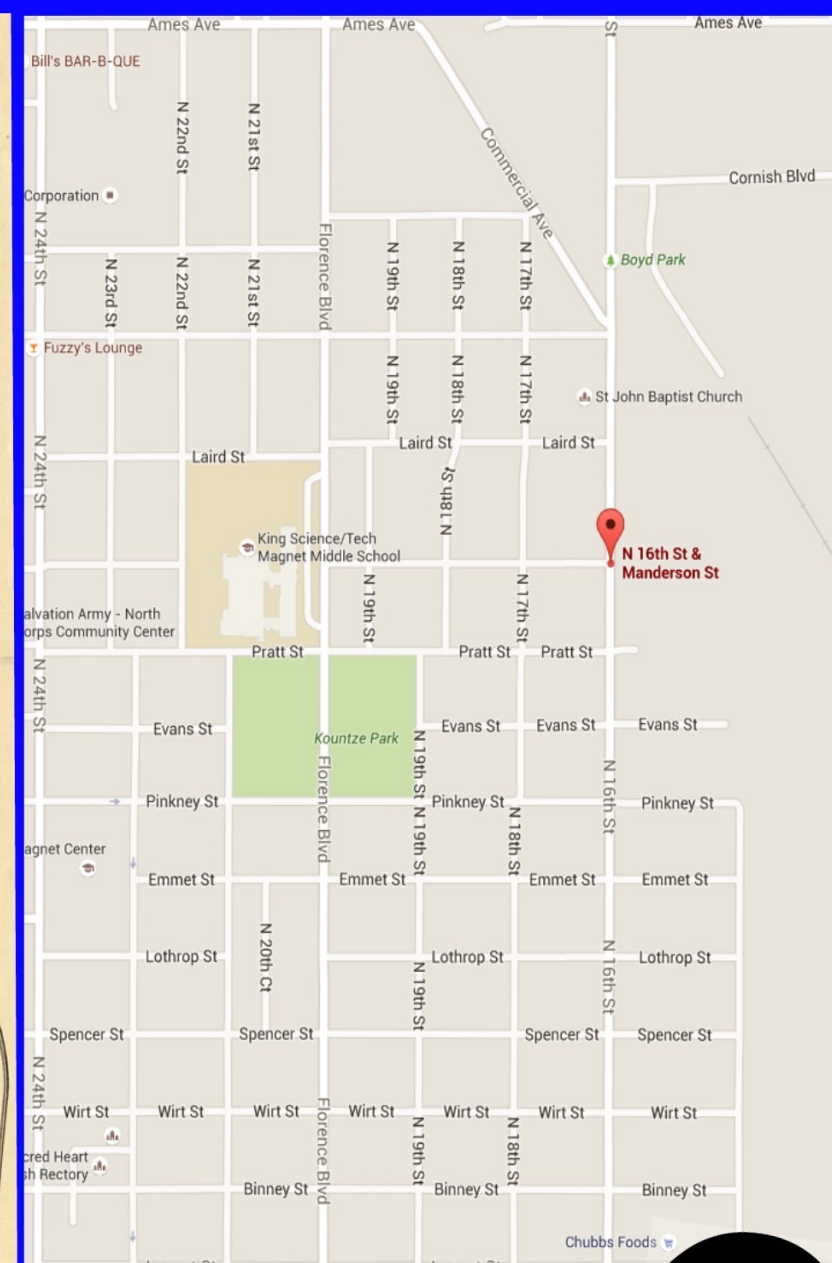




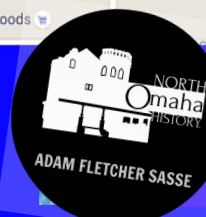
Official Map of the 1898 Trans-Mississippi International Exposition



Official Map of the 1899 Greater America Exposition



2015 Google Map







## SUMMARY

12 Grand Court Buildings

9 State Buildings

8 Services Buildings

11 Midway Buildings

15 Amusement Buildings

**= 120 Buildings Total**

Walker & Kimball of Boston &  
Omaha,  
Master Architects

Est 35 additional architects  
involved

10 Master Builders

Today's Kountze Park is 11 acres




# Then

## Expo Grounds

- 1897-1899
- 180-acres
- 120 Buildings







. DANNER

Now

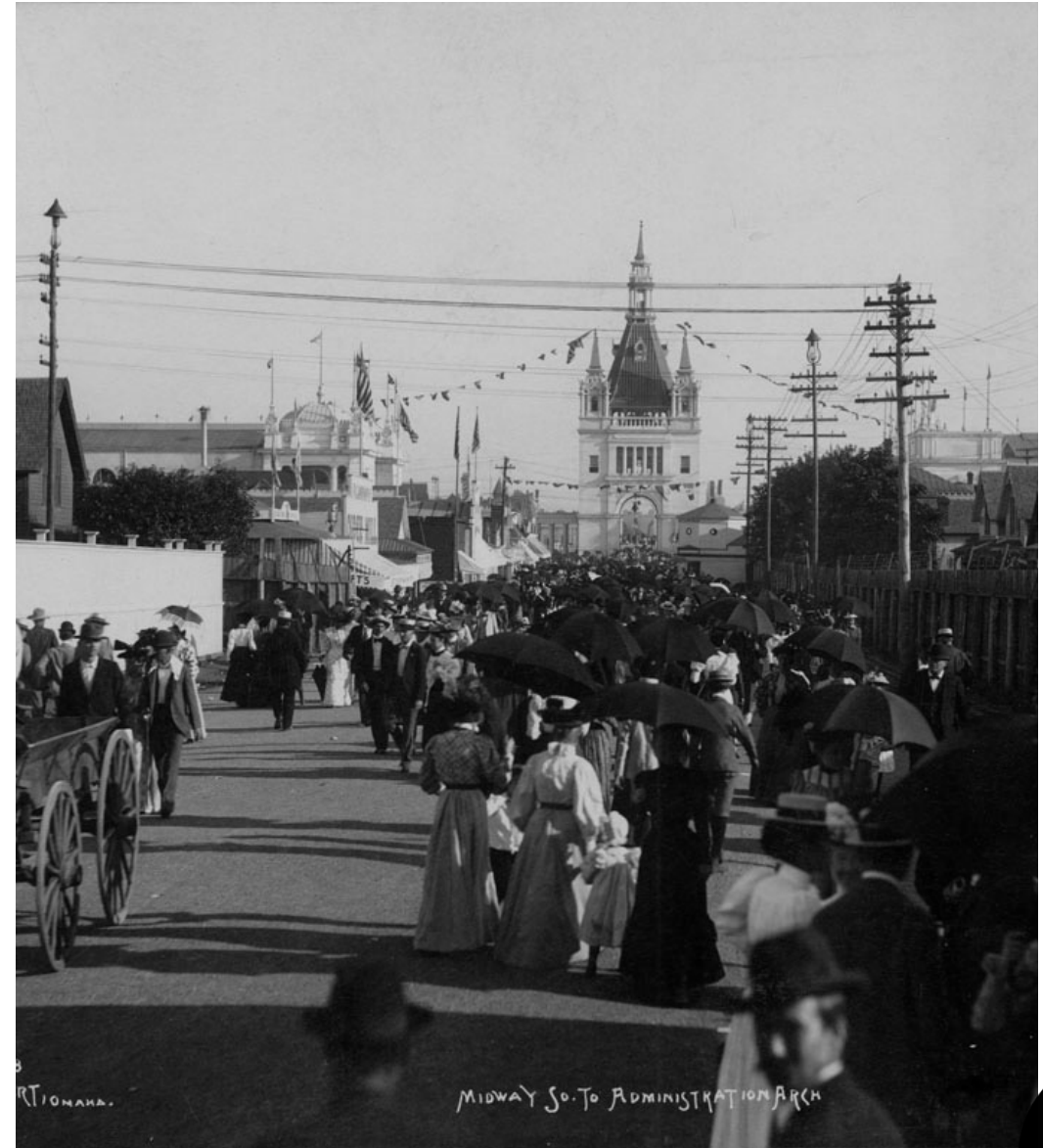
**E. Danner Neighborhood, Saratoga Neighborhood**

- Built 1895—present
- 180-acres
- Est 100 houses, 1 school, 30 commercial & industrial buildings



# THEN #1

- Administration Arch
- Built in 1897, Demolished in 1899
- Located at Florence Boulevard and Pratt Street





# Now #1

- Kountze Park North Entrance
- Re-opened 1899
- Located at Florence Boulevard and Pratt Street



# Then #2

- Manufactures Building
- N. 19<sup>th</sup> and Pratt Streets
- Built in 1897-98, Demolished in 1899

COPYRIGHT, 1898.  
F.A. RINEHART,  
OMAHA

MANUFACTURES BLOG







# Now #2

## 3 Houses and Kountze Park

- 3619, 3617 & 3615 N. 19<sup>th</sup> Street, Built 1910
- Tennis Courts, Built in 1949 and Rebuilt in 1958



# Then #3

- Machinery and Electricity Building
- N. 17<sup>th</sup> and Pratt Streets
- Built in 1897, Demolished in 1899





# Now #3

## 5 Houses

- 1801 Pratt, Built 1911
- 1805 Pratt, Built 1911
- 1807 Pratt, Empty
- 1813 Pratt, Built 1911
- 1817 Pratt, Built 1911



## THEN #4

### Rinehart Studio

1619, 1721 Pratt Street

Built 1898, Demolished 1898



# NOW #4

- **2 Houses**
- 1619, 1721 Pratt Street
- Built 1910





# Then #5

## Girls and Boys Building

- Built 1898, Demolished 1899
- Located at N. 16<sup>th</sup> and Pratt Streets





## NOW #5

### 4 Houses

- 3610 N. 16<sup>th</sup>, Built in 1917
- 3614 N. 16<sup>th</sup>, Built in 1917
- 1609 Pratt, Built in 1911
- 1615 Pratt, Built in 1911

# Then #6

## Auditorium

- Built 1898, Demolished 1899
- Located at N. 16<sup>th</sup> and Pinkney Streets





An aerial photograph of a city block. The central focus is a large, two-story commercial building with a flat, reddish-brown roof and a light-colored facade. It features a prominent dark red or maroon decorative band across the upper floor with several rectangular openings. To the left of this building is a smaller, single-story house with a similar reddish-brown roof and light blue siding. Further left, another house with a reddish-brown roof is partially visible. The street in the foreground is paved with light-colored rectangular stones in a grid pattern. A utility pole stands on the left side of the street. In the background, there are more buildings and trees.

**NOW #5**

**I Commercial Building and 2 Houses**

- 3506 N. 16<sup>th</sup>, Built in 1909
- 1610 Pinkney, Built in 1911
- 1612 Pinkney, Built in 1907

# THEN #7

## Mines and Mining Building

- N. 18<sup>th</sup> and Pinkney
- Built 1898, Demolished 1899







## NOW #7

### 4 Houses and 1 Lot

- 1620 Pinkney, Built in 1910
- 1628 Pinkney, Built in 1910
- 1802 Pinkney, Built in 1910
- 1804 Pinkney, Built in 2005

# THEN #8

## Liberal Arts Building

- Built 1897, Demolished 1899
- N. 19<sup>th</sup> and Pinkney Streets







## NOW #8

### Kountze Park

- Pavilion, Built in 1907, Demolished 1953, Rebuilt in 1959
- Spray Park, Built circa 2014

# Then #9

## Arch of the States

- Florence Boulevard and Pinkney
- Built 1897, Demolished 1899







# NOW #8

## Kountze Park

- Florence Boulevard and Pinkney Street

# Then #9







# Then #9

## Fine Arts Building

- N. 21<sup>st</sup> and Pinkney Streets
- Built 1898, Demolished 1899



**NOW #9**

### Kountze Park Baseball Field

- Opened 1924
- N. 21<sup>st</sup> and Pinkney Streets



# THEN #10

## Columnnade

- Built 1898, Demolished 1899
- N. 18<sup>th</sup> and Pratt Streets
- N. 17<sup>th</sup> and Pratt Streets
- N. 22<sup>nd</sup> and Pratt Streets
- N. 17<sup>th</sup> and Pinkney Streets
- N. 18<sup>th</sup> and Pinkney Streets
- N. 22<sup>nd</sup> and Pinkney Streets





## NOW #10

### 6 Houses

- 2112 Pinkney Street, Built 1910
- 2116 Pinkney Street, Built 1908
- 2118 Pinkney, Built 2007
- 2124 Pinkney, Built 1905
- 2128 Pinkney, Built 1909
- 2130 Pinkney, Built 1908



# THEN #11

## Government Building

- N. 22<sup>nd</sup> and Pinkney-Pratt Streets
- Built 1897, Demolished 1899





## NOW #11

### 24 Houses

- N. 22<sup>nd</sup> to N. 24<sup>th</sup> Streets, Pinkney to Pratt Streets
- Built 1908—1912



# Then #12

## Agricultural Building

- N. 21<sup>st</sup> and Pratt Streets
- Built 1898, Demolished 1899

COPYRIGHT 1898, BY DETROIT PHOTOGRAPHIC CO.

AGRICULTURAL BUILDING.







**NOW #12**

### Kountze Park Basketball Courts and 2 Houses

- Florence Boulevard and Pratt Street, Built 1959
- 3622 N. 21<sup>st</sup> Street, Built 1915
- 3614 N. 21<sup>st</sup> Street, Built 1915



# THEN #13

## Horticulture Building

- Built 1898, Demolished 1899
- North 15<sup>th</sup> and Lothrop Streets





## NOW #13

### 5 Houses and 4 Empty Lots

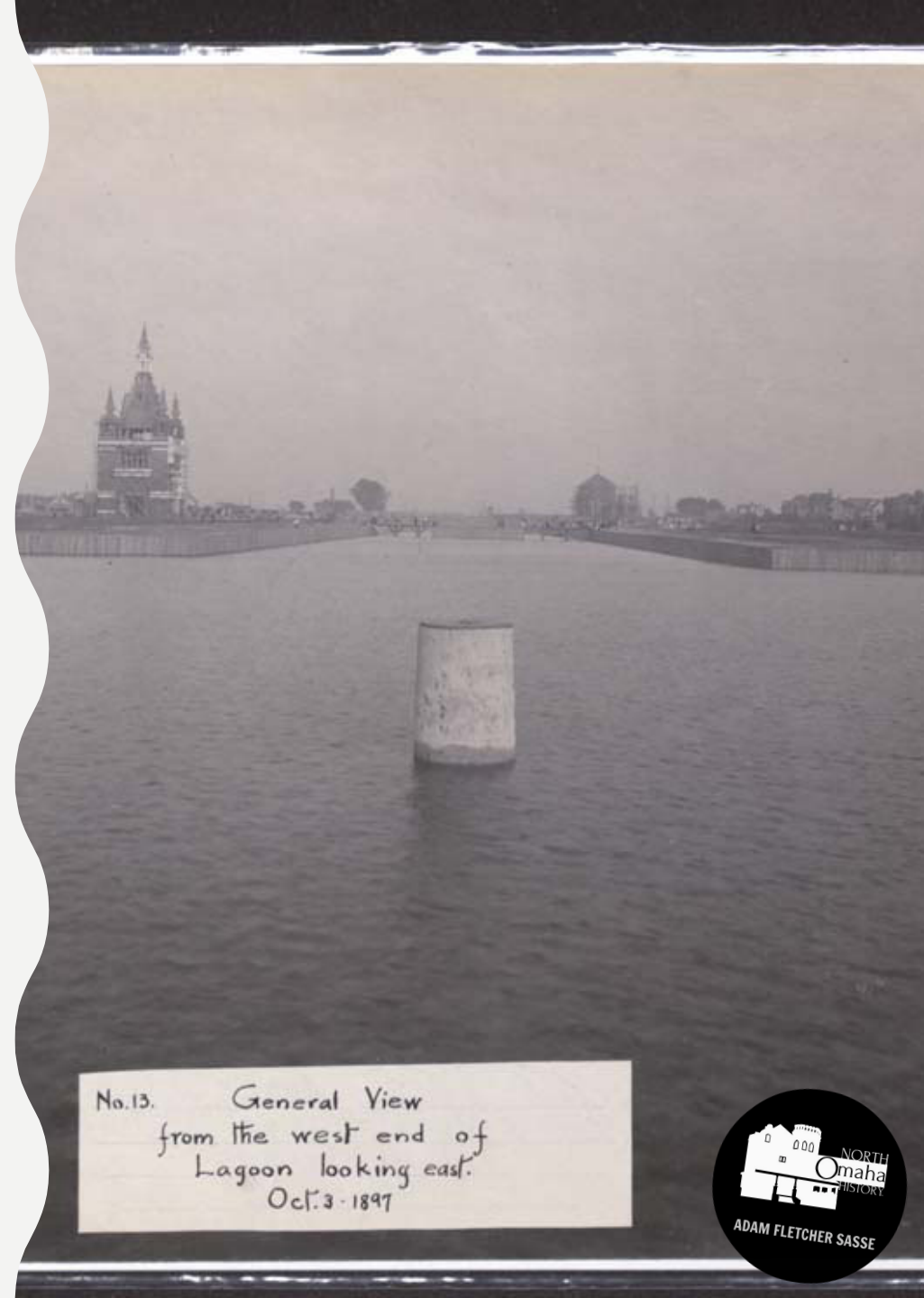
- 1481 Lothrop Street, Built 1907
- 1475 Lothrop Street, Built 1895 (!?)
- 1463 Lothrop Street, Built 1907
- 1461 Lothrop Street, Built 1907
- 1455 Lothrop Street, Built 1907



# THEN #14

## Grand Court Lagoon

- Built 1897, Demolished 1899



No. 13. General View  
from the west end of  
Lagoon looking east.  
Oct. 3 - 1897



**NOW #14**

### Est 40 Houses and Kountze Park

- Evans Street, N. 21<sup>st</sup> to N. 22<sup>nd</sup>
- Built circa 1907—2007



# SPECIAL THANKS

- Douglas County Historical Society
- Omaha History Club, including Michaela Armetta, Michele Wyman, Ryan Roenfeld, Micah Evans, et al
- Mark Schulz





Trans-Mississippi and  
International Exposition  
Website, UNL



Omaha World-Herald  
Online Archives



Google Maps



Douglas County  
Assessor's Office  
Website



Omaha's Trans-  
Mississippi Exposition by  
Jess R. Peterson

# SOURCES



**FOR MORE  
INFORMATION**

**NORTHOMAHAHISTORY.COM**

